

# A Global Assessment of the Water Footprint of Farm Animal Products

Mesfin M. Mekonnen\* and Arjen Y. Hoekstra

*Department of Water Engineering and Management, University of Twente, P.O. Box 217, 7500 AE Enschede, The Netherlands*

## ABSTRACT

The increase in the consumption of animal products is likely to put further pressure on the world's freshwater resources. This paper provides a comprehensive account of the water footprint of animal products, considering different production systems and feed composition per animal type and country. Nearly one-third of the total water footprint of agriculture in the world is related to the production of animal products. The water footprint of any animal product is larger than the water footprint of crop products with equivalent nutritional value. The average water footprint per calorie for beef is 20 times larger than for cereals and starchy roots. The water footprint per gram of protein for milk, eggs and chicken meat is 1.5 times larger than for pulses. The unfavorable feed conversion efficiency for animal products is largely responsible for the relatively large water footprint of animal products

compared to the crop products. Animal products from industrial systems generally consume and pollute more ground- and surface-water resources than animal products from grazing or mixed systems. The rising global meat consumption and the intensification of animal production systems will put further pressure on the global freshwater resources in the coming decades. The study shows that from a freshwater perspective, animal products from grazing systems have a smaller blue and grey water footprint than products from industrial systems, and that it is more water-efficient to obtain calories, protein and fat through crop products than animal products.

**Key words:** meat consumption; livestock production; animal feed; water consumption; water pollution; sustainable consumption.

## INTRODUCTION

Global meat production has almost doubled in the period 1980–2004 (FAO 2005) and this upward trend will continue given the projected doubling of meat production in the period 2000–2050 (Steinfeld and others 2006). To meet the rising demand for animal products, the on-going shift from traditional

extensive and mixed to industrial farming systems is likely to continue (Bouwman and others 2005; Naylor and others 2005; Galloway and others 2007). There is a rich literature on the expected environmental consequences of increased consumption of animal products (Naylor and others 2005; Myers and Kent 2003; McAlpine and others 2009; Pelletier and Tyedmers 2010; Sutton and others 2011), and on the pros and cons of industrial versus conventional farming systems (Lewis and others 1990; Capper and others 2009). Specific fields of interest include, amongst others, animal welfare (Fraser 2008; Thompson 2008), excessive use of antibiotics (Gustafson and Bowen 1997; Witte 1998; Smith and others 2002; McEwen 2006), the demand for scarce lands to produce the required

Received 30 June 2011; accepted 21 December 2011;  
published online 24 January 2012

**Electronic supplementary materials:** The online version of this article (doi: 10.1007/s10021-011-9517-8) contains supplementary material which is available to authorized users.

**Author Contributions:** MMM designed the study, performed research, analysed data and wrote the paper; AYH designed the study, contributed new methods, analysed data and wrote the paper.

\*Corresponding author; e-mail: m.m.mekonnen@ctw.utwente.nl

feed (Naylor and others 2005; Keyzer and others 2005; Nepstad and others 2006) and the contribution of livestock to the emission of greenhouse gases (Pelletier and Tyedmers 2010; Tilman and others 2001; Bouwman and others 2011). Although it is known that animal products are very water-intensive (Pimentel and others 2004; Chapagain and Hoekstra 2003), little attention has been paid thus far to the total impact of the livestock sector on the global demand for freshwater resources. Most of the water use along the supply chain of animal products takes place in the growing of feed. As a result of the increasing global trade in feed crops and animal products and the growth of meat preservation over longer periods, consumers of animal products have often become spatially disconnected from the processes necessary to produce the products, so that the link between animal products and freshwater consumption is not well known (Naylor and others 2005; Hoekstra 2010; Hoekstra and Chapagain 2008).

There are earlier publications on the water use behind animal production (Steinfeld and others 2006; Galloway and others 2007; Pimentel and others 2004; Chapagain and Hoekstra 2003, 2004; De Fraiture and others 2007; Peden and others 2007; Van Breugel and others 2010; Renault and Wallender 2000), but a detailed comprehensive global assessment was lacking. The objective of the current paper is to provide such an assessment by quantifying the water footprint of farm animals and of the various derived animal products per country and per animal production system. The period of analysis was 1996–2005. The water footprint of a product consists of three colour-coded components: the green, blue and grey water footprint (Hoekstra and Chapagain 2008). The blue water footprint refers to the volume of surface and groundwater consumed (that is evaporated after withdrawal) as a result of the production of the product; the green water footprint refers to the rainwater consumed. The grey water footprint refers to the volume of freshwater that is required to assimilate the load of pollutants based on existing ambient water quality standards. Water footprint calculations have been based on the recently established global water footprint standard (Hoekstra and others 2011), which was developed based on earlier water footprint studies (see for example, Chapagain and others 2006; Hoekstra and Chapagain 2007; Gerbens-Leenes and others 2009; Aldaya and others 2010).

With the exception of Chapagain and Hoekstra (2003, 2004), no previous study has estimated the water footprint of animal products by product and

country at a global level. Although Chapagain and Hoekstra (2003, 2004) were able to estimate the water footprint of farm animals and animal products per country, they have made very crude assumptions regarding the composition and amount of feed consumed by different animals. Besides, the water footprints of feed crops were estimated based on national average climatic data. The main differences with Chapagain and Hoekstra (2003, 2004) are: (1) we estimated the amount of feed consumed per animal category, per production system and per country based on estimates of feed conversion efficiencies and statistics on the annual production of animal products, (2) we took into consideration the relative occurrence of the three production systems (grazing, mixed and industrial) in each country and (3) we estimated the green, blue and grey water footprints of growing feed crops using a grid-based dynamic water balance model that takes into account local climate, soil conditions and data on irrigation at a high spatial resolution.

## METHODS

### The Water Footprint of an Animal

We follow the water footprint definitions and methodology as set out in Hoekstra and others (2011). The blue water footprint refers to consumption of blue water resources (surface and groundwater) along the supply chain of a product. 'Consumption' refers to loss of water from the available ground-surface water body in a catchment area. Losses occur when water evaporates, returns to another catchment area or the sea or is incorporated into a product. The green water footprint refers to consumption of green water resources (rainwater in so far as it does not become runoff). The grey water footprint refers to pollution and is defined as the volume of freshwater that is required to assimilate the load of pollutants given natural background concentrations and existing ambient water quality standards.

We consider eight farm animal categories: beef and dairy cattle, pigs, sheep, goats, broiler and layer chickens, and horses. When estimating total feed amounts and total water footprints per category, we include 'buffaloes' in the category of 'beef cattle' and 'asses and mules' in the category of 'horses'.

The water footprint of a live animal consists of different components: the indirect water footprint of the feed and the direct water footprint related to the drinking water and service water consumed

(Chapagain and Hoekstra 2003, 2004). The water footprint of an animal is expressed as:

$$\text{WF}[a, c, s] = \text{WF}_{\text{feed}}[a, c, s] + \text{WF}_{\text{drink}}[a, c, s] + \text{WF}_{\text{serv}}[a, c, s] \quad (1)$$

where  $\text{WF}_{\text{feed}}[a, c, s]$ ,  $\text{WF}_{\text{drink}}[a, c, s]$  and  $\text{WF}_{\text{serv}}[a, c, s]$  represent the water footprint of an animal for animal category  $a$  in country  $c$  in production systems  $s$  related to feed, drinking water and service-water consumption, respectively. Service water refers to the water used to clean the farmyard, wash the animal and carry out other services necessary to maintain the environment. The water footprint of an animal and its three components can be expressed in terms of  $\text{m}^3/\text{y}/\text{animal}$ , or, when summed over the lifetime of the animal, in terms of  $\text{m}^3/\text{animal}$ . For beef cattle, pigs, sheep, goats and broiler chickens—animals that provide their products after they have been slaughtered—it is most useful to look at the water footprint of the animal at the end of its lifetime, because it is this total that will be allocated to the various products (for example, meat, leather). For dairy cattle and layer chickens, it is most straightforward to look at the water footprint of the animal per year (averaged over its lifetime), because one can easily relate this annual animal water footprint to its average annual production (milk, eggs).

The water footprint of an animal related to the feed consumed consists of two parts: the water footprint of the various feed ingredients and the water that is used to mix the feed:

$$\text{WF}_{\text{feed}}[a, c, s] = \frac{\sum_{p=1}^n \left( \text{Feed}[a, c, s, p] \times \text{WF}_{\text{prod}}^*[p] \right) + \text{WF}_{\text{mixing}}[a, c, s]}{\text{Pop}^*[a, c, s]} \quad (2)$$

$\text{Feed}[a, c, s, p]$  represents the annual amount of feed ingredient  $p$  consumed by animal category  $a$  in country  $c$  and production system  $s$  (ton/y),  $\text{WF}_{\text{prod}}^*[p]$  the water footprint of feed ingredient  $p$  ( $\text{m}^3/\text{ton}$ ),  $\text{WF}_{\text{mixing}}[a, c, s]$  the volume of water consumed for mixing the feed for animal category  $a$  in country  $c$  and production system  $s$  ( $\text{m}^3/\text{y}/\text{animal}$ ) and  $\text{Pop}^*[a, c, s]$  the number of slaughtered animals per year or the number of milk or egg producing animals in a year for animal category  $a$  in country  $c$  and production system  $s$ .

### The Water Footprint of Feed Ingredients

The water footprints of the different crops, roughages and crop by-products ( $\text{WF}_{\text{prod}}^*[p]$ ,  $\text{m}^3/\text{ton}$ ) that

are eaten by the various farm animals have been calculated following the methodology developed by Hoekstra and Chapagain (2008) and Hoekstra and others (2011). The water footprints of feed crops were estimated using a crop water use model that estimates crop water footprints at a  $5 \times 5$  arc minute spatial resolution globally (Mekonnen and Hoekstra 2010, 2011). Grey water footprints were estimated by looking at leaching and runoff of nitrogen-fertilizers only, following Mekonnen and Hoekstra (2010, 2011). As animal feed in a country originates from domestic production and imported products, for the calculation of the water footprint of animal feed in a country, we have taken a weighted average water footprint according to the relative volumes of domestic production and import:

$$\text{WF}_{\text{prod}}^*[p] = \frac{P[p] \times \text{WF}_{\text{prod}}[p] + \sum_{n_e} (T_i[n_e, p] \times \text{WF}_{\text{prod}}[n_e, p])}{P[p] + \sum_{n_e} T_i[n_e, p]} \quad (3)$$

in which  $P[p]$  is the production quantity of feed product  $p$  in a country (ton/y),  $T_i[n_e, p]$  the imported quantity of feed product  $p$  from exporting nation  $n_e$  (ton/y),  $\text{WF}_{\text{prod}}[p]$  the water footprint of feed product  $p$  when produced in the nation considered ( $\text{m}^3/\text{ton}$ ) and  $\text{WF}_{\text{prod}}[n_e, p]$  the water footprint of feed product  $p$  as in the exporting nation  $n_e$  ( $\text{m}^3/\text{ton}$ ). The water footprint of crop residues such as bran, straw, chaff and leaves and tops from sugar beet have already been accounted for in the main product, therefore their water footprint was set equal to zero.

### Volume and Composition of Feed

The volume and composition of the feed consumed vary depending on the type of animal, the production system and the country. The amount of feed consumed is estimated following the approach of Hendy and others (1995), in which the total annual feed consumption (including both concentrates and roughages) is calculated based on annual production of animal products and feed conversion efficiencies. Only for horses we have used the approach as in Chapagain and Hoekstra (2003), which means that we multiplied the estimated feed consumption per animal by the number of animals, thus arriving at an estimate of the total feed consumed by horses.

The total feed per production system for both ruminants and non-ruminants animals is calculated as follows:

$$\text{Feed}[a, c, s] = \text{FCE}[a, c, s] \times P[a, c, s] \quad (4)$$

where  $\text{Feed}[a, c, s]$  is the total amount of feed consumed by animal category  $a$  (ton/y) in country  $c$  and production system  $s$ ,  $\text{FCE}[a, c, s]$  the feed conversion efficiency (kg dry mass of feed/kg of product) for animal category  $a$  in country  $c$  and production system  $s$ , and  $P[a, c, s]$  the total amount of product (meat, milk or egg) produced by animal category  $a$  (ton/y) in country  $c$  and production system  $s$ . The estimated global amount of feed consumption per animal category and world region is presented in Appendix II (Supplementary material). Feed consumption per production system is shown in Appendix III (Supplementary material).

### Estimating Feed Conversion Efficiencies

Feed conversion efficiency is defined as the amount of feed consumed per unit of produced animal product (for example, meat, milk, egg). Feed conversion efficiencies were estimated separately for each animal category (beef cattle, dairy cattle, sheep, goats, pigs, broiler chickens and egg-layer chickens), for each animal production system and per country. Although the term used may suggest precisely the opposite, animals that have a low 'feed conversion efficiency' are efficient users of feed. We use the term here as generally used in livestock studies. The feed conversion efficiencies (FCE, kg dry mass/kg product) for non-ruminants (pigs and chickens) were adopted from Hendy and others (1995). For ruminants (cattle, goats, sheep), feed conversion efficiencies were estimated through dividing feed intake per capita by annual production (of beef, milk, sheep and goat meat) per capita:

$$\text{FCE}[a, c, s] = \frac{\text{FI}[a, c, s]}{\text{PO}[a, c, s]} \quad (5)$$

where  $\text{FI}[a, c, s]$  is the feed intake per head by ruminant animal category  $a$  in country  $c$  and production system  $s$  (kg dry mass/y/animal), and  $\text{PO}[a, c, s]$  the product output per head for ruminant animal category  $a$  in country  $c$  and production system  $s$  (kg product/y/animal). The product output (beef, milk, sheep and goat meat) per animal for ruminants is calculated as:

$$\text{PO}[a, c, s] = \frac{P[a, c, s]}{\text{Pop}[a, c, s]} \quad (6)$$

in which  $P[a, c, s]$  is the total annual production of beef, milk, sheep meat or goat meat in country  $c$

in production system  $s$  (kg/y) and  $\text{Pop}[a, c, s]$  the total population of beef cattle, dairy cattle, sheep or goats in that country and production system. Region-specific feed conversion efficiencies are presented in Appendix I (Supplementary material).

### Estimating the Total Annual Production of Animal Products

The meat production ( $P_{\text{meat}}$ , ton/y) per animal category  $a$  (beef cattle, pigs, sheep and goats) in country  $c$  and production system  $s$  is estimated by multiplying the carcass yield per slaughtered animal by the annual number of animals slaughtered:

$$P_{\text{meat}}[a, c, s] = \text{CY}[a, c, s] \times \text{SA}[a, c, s] \quad (7)$$

The carcass yield (CY, kg/animal) for each animal category per production system was estimated by combining country average carcass yield data from FAO (2009) with data on animal live weight per production system per economic region (Hendy and others 1995) and data on carcass weight as percentage of live weight (FAO 2003). The obtained carcass yields were scaled such that the total meat production per animal category equals the value provided by FAO (2009). The number of slaughtered animals per production system (SA, number of animal/y) was calculated by multiplying the total animal number by the animal off-take rate per production system:

$$\text{SA}[a, c, s] = \text{Pop}[a, c, s] \times \text{OR}[a, c, s] \quad (8)$$

where  $\text{Pop}[a, c, s]$  is the population of animal category  $a$  in country  $c$  for production system  $s$  and  $\text{OR}[a, c, s]$  the off-take rate, which is the fraction of the animal population that is taken out in a given year for slaughter (dimensionless).

Milk and egg production per production system and country were calculated as:

$$P_{\text{milk}}[a, c, s] = \text{MY}[a, c, s] \times \text{DC}[a, c, s] \quad (9)$$

$$P_{\text{egg}}[a, c, s] = f_{\text{egg}}[a, c, s] \times P_{\text{egg}}[a, c] \quad (10)$$

where  $P_{\text{milk}}[a, c, s]$  and  $P_{\text{egg}}[a, c, s]$  represent production of milk and egg in country  $c$  and production system  $s$ , respectively (ton/y),  $\text{MY}[a, c, s]$  milk yield per dairy cow in country  $c$  and production system  $s$  (ton/dairy cow),  $\text{DC}[a, c, s]$  the number of dairy cows in country  $c$  and production system  $s$ ,  $f_{\text{egg}}[a, c, s]$  the fraction of egg produced in country  $c$  and production system  $s$  and  $P_{\text{egg}}[a, c]$  the total amount of egg produced in country  $c$  (ton/y).



## Estimating the Feed Composition

Animal feeds are generally divided into ‘concentrates’ and ‘roughages’. The volume of concentrate feed has been estimated per animal category and per production system as:

$$\text{Concentrate}[a, c, s] = \text{Feed}[a, c, s] \times f_c[a, c, s] \quad (11)$$

where  $\text{Concentrate}[a, c, s]$  is the volume of concentrate feed consumed by animal category  $a$  in country  $c$  and production system  $s$  (ton/y) and  $f_c[a, c, s]$  the fraction of concentrate in the total feed for animal category  $a$  in country  $c$  and production system  $s$ . For the latter variable, data have been obtained from Bouwman and others (2005) and Hendy and others (1995).

The composition of concentrate feeds varies across animal species and regions of the world. To our knowledge, there are no datasets with global coverage on the composition of feed for the different animals per country. Therefore, we have made a number of assumptions concerning the concentrate feed composition of the different animal species. According to Hendy and others (1995), the diets of pigs and poultry include, on average, 50–60% cereals, 10–20% oil meals and 15–25% ‘other concentrates’ (grain substitutes, milling by-products, non-conventional concentrates). Wheeler and others (1981) provide the feed composition in terms of major crop categories for the different animal categories. We have used these and other sources in combination with FAOSTAT country average concentrate feed values for the period 1996–2003 (FAO 2009) to estimate the diet composition of the different animal species. To estimate the feed in terms of specific crops per animal, we first estimated the feed in terms of major crop categories following Wheeler and others (1981). The feed in terms of major crop categories is further distributed to each crop proportional to the crop’s share in its crops category as obtained from FAO (2009). The roughage feed is divided into fodder, grass and crop residues using the data obtained from Bouwman and others (2005). The estimated fraction of concentrate feed in total feed dry matter, per animal category, production system and world region is presented in Appendix IV (Supplementary material).

## DATA

A large amount of data has been collected from different sources. A major data source for animal stocks, numbers of animals slaughtered each year, annual production of animal products, and concentrate feed per country is FAOSTAT (FAO 2009).

Other important sources that have been used are: Bouwman and others (2005), Seré and Steinfeld (1996), Wint and Robinson (2007), Hendy and others (1995), FAO (2003) and Wheeler and others (1981). Appendix V (Supplementary material) summarizes how specific data have been obtained from these different sources.

## RESULTS

### The Water Footprint of Animal Products per Ton

By combining the feed conversion efficiency—distinguishing between different animals, production systems and countries (Hendy and others 1995)—and the water footprint of the various feed ingredients (Mekonnen and Hoekstra 2011) we estimated the water footprint of different animals and animal products per production systems and per country. The water footprints of animal products vary greatly across countries and production systems. The type of production system is highly relevant for the size, composition and geographic spread of the water footprint of an animal product, because it determines feed conversion efficiency, feed composition and origin of feed. Differences between countries are related to existing country differences in feed conversion efficiencies, but also to the fact that water footprints of feed crops vary across countries as a function of differences in climate and agricultural practice. The Netherlands, for example, shows lower total water footprints for most animal products if compared to the USA. The USA, in turn, generally shows lower total water footprints for animal products than India (Table 1). The smaller water footprint in the Netherlands compared to the USA and India, is due to the fact that animal production in the Netherlands is dominated by the industrial production system, which generally has a smaller total water footprint than grazing and mixed systems. In addition, the water footprint per ton of feed material in the Netherlands is lower than in the two other countries. Due to the specific climate and poor agricultural practices in India, the water footprint per ton of feed in this country is larger than in the Netherlands and the USA.

When we look at global averages (Table 1), we see that the water footprint of meat increases from chicken meat (4,300 m<sup>3</sup>/ton), goat meat (5,500 m<sup>3</sup>/ton), pig meat (6,000 m<sup>3</sup>/ton) and sheep meat (10,400 m<sup>3</sup>/ton) to beef (15,400 m<sup>3</sup>/ton). The differences can be partly explained from the different feed conversion efficiencies of the

**Table 1.** The Green, Blue and Grey Water Footprint of Selected Animal Products for Selected Countries and the Weighted Global Average ( $m^3/ton$ )

Animal products	Farming system	China			India			Netherlands			USA			Weighted average			
		Green	Blue	Grey	Green	Blue	Grey	Green	Blue	Grey	Green	Blue	Grey	Green	Blue	Grey	Total
Beef	Grazing	16,140	213	0	25,913	242	0	10,319	761	664	19,102	525	590	21,121	465	243	21,829
	Mixed	13,227	339	103	16,192	533	144	10,319	761	664	12,726	546	768	14,803	508	401	15,712
	Industrial	10,922	933	1,234	12,412	1,471	866	3,934	349	225	2,949	356	551	8,849	683	712	10,244
	Weighted average	12,795	495	398	15,537	722	288	5,684	484	345	12,933	525	733	14,414	550	451	15,415
Sheep meat	Grazing	9,606	388	0	11,441	489	0	8,248	422	35	9,842	318	74	7,784	484	67	8,335
	Mixed	5,337	454	14	7,528	582	316	8,248	422	35	0	0	0	4,607	800	216	5,623
	Industrial	2,366	451	22	4,523	593	484	8,248	422	35	10,948	315	44	9,813	522	76	10,412
	Weighted average	5,347	452	14	7,416	582	314	8,248	422	35	10,948	315	44	9,813	522	76	10,412
Goat meat	Grazing	5,073	272	0	8,081	374	0	2,443	453	4	9,277	285	0	4,691	313	4	5,007
	Mixed	2,765	283	0	4,544	381	9	2,443	453	4	2,431	413	18	2,431	413	18	2,863
	Industrial	1,187	437	0	2,046	436	30	2,443	454	4	5,185	330	6	5,185	330	6	5,521
	Weighted average	2,958	312	0	4,194	393	13	2,443	454	4	5,118	870	890	7,660	431	632	8,724
Pig meat	Grazing	11,134	205	738	3,732	391	325	4,048	479	587	5,118	870	890	2,337	210	325	2,873
	Mixed	5,401	356	542	4,068	893	390	3,653	306	451	4,953	743	916	3,545	313	467	4,325
	Industrial	3,477	538	925	9,236	2,014	1,021	3,776	236	427	3,404	563	634	6,781	418	446	7,644
	Weighted average	5,050	405	648	5,415	1,191	554	3,723	268	438	4,102	645	761	4,907	459	622	5,988
Chicken meat	Grazing	4,695	448	1,414	11,993	1,536	1,369	2,535	113	271	2,836	294	497	7,919	734	718	9,370
	Mixed	3,005	297	905	7,676	995	876	1,509	76	161	1,688	183	296	4,065	348	574	4,987
	Industrial	1,940	195	584	3,787	496	432	1,548	77	165	1,731	187	303	2,337	210	325	2,873
	Weighted average	2,836	281	854	6,726	873	768	1,545	77	165	1,728	187	303	3,545	313	467	4,325
Egg	Grazing	3,952	375	1,189	10,604	1,360	1,176	1,695	76	161	1,740	183	331	6,781	418	446	7,644
	Mixed	2,351	230	708	6,309	815	699	1,085	51	103	1,113	121	212	3,006	312	545	3,863
	Industrial	2,086	206	628	3,611	472	400	1,187	55	113	1,218	132	232	2,298	205	369	2,872
	Weighted average	2,211	217	666	4,888	635	542	1,175	55	111	1,206	130	230	2,592	244	429	3,265
Milk	Grazing	1,580	106	128	1,185	105	34	572	50	32	1,106	69	89	1,087	56	49	1,191
	Mixed	897	147	213	863	132	65	431	40	23	582	59	88	790	90	76	956
	Industrial	927	145	210	885	130	63	500	43	25	444	61	100	1,027	98	82	1,207
	Weighted average	8,600	577	696	6,448	572	188	3,111	272	176	6,022	373	482	5,913	305	265	6,484
Butter	Grazing	4,880	799	1,161	4,697	716	352	2,345	218	123	3,169	321	478	4,297	492	415	5,204
	Mixed	5,044	789	1,141	4,819	706	341	2,720	233	136	2,417	330	543	5,591	532	448	6,571
	Industrial	7,348	493	595	5,510	489	160	2,513	224	134	3,519	324	483	4,695	465	393	5,553
	Weighted average	4,169	683	992	4,013	612	301	2,003	186	105	2,708	274	409	3,671	421	354	4,446
Milk powder	Grazing	0	0	0	0	0	0	2,324	199	116	2,065	282	464	4,777	455	382	5,614
	Mixed	4,309	674	975	4,117	603	291	2,147	191	114	3,007	277	413	4,011	398	336	4,745
	Industrial	0	0	0	0	0	0	2,147	191	114	3,007	277	413	4,011	398	336	4,745
	Weighted average	4,309	674	975	4,117	603	291	2,147	191	114	3,007	277	413	4,011	398	336	4,745

Table 1. continued

Animal products	Farming system	China			India			Netherlands			USA			Weighted average			
		Green	Blue	Grey	Green	Blue	Grey	Green	Blue	Grey	Green	Blue	Grey	Green	Blue	Grey	Total
Cheese	Grazing	7,812	540	633	5,857	535	171	2,826	263	160	5,470	355	438	5,371	293	241	5,905
	Mixed	4,432	742	1,055	4,267	666	320	2,130	214	111	2,878	307	435	3,903	463	377	4,743
	Industrial	4,581	732	1,036	4,377	657	310	2,471	227	124	2,196	315	493	5,078	500	406	5,984
Leather (beef cattle)	Weighted average	14,300	266	0	25,195	310	0	2,283	219	121	3,196	310	439	4,264	439	357	5,060
	Grazing	11,719	377	91	15,743	593	140	11,883	947	765	14,185	681	856	16,701	644	453	17,799
	Mixed	9,677	904	1,093	12,068	1,505	842	4,530	513	259	3,287	497	614	9,487	805	763	11,056
	Industrial	11,323	515	352	15,103	777	280	6,067	589	369	14,450	658	819	15,916	679	498	17,093
	Weighted average																

animals. Beef production, for example, requires 8 times more feed (in dry matter) per kilogram of meat compared to producing pig meat, and 11 times if compared to the case of chicken meat. This is not the only factor, however, that can explain the differences. Another important factor is the feed composition. Particularly the fraction of concentrate feed in the total feed is important, because concentrate feed generally has a larger water footprint than roughages. Chickens are efficient from a total feed conversion efficiency point of view, but have a large fraction of concentrates in their feed. This fraction is 73% for broiler chickens (global average), whereas it is only 5% for beef cattle.

For all farm animal products, except dairy products, the total water footprint per unit of product declines from the grazing to the mixed production system and then again to the industrial production system. The reason is that, when moving from grazing to industrial production systems, feed conversion efficiencies get better (Appendix I — Supplementary Material). Per unit of product, about three to four times more feed is required for grazing systems when compared to industrial systems. More feed implies that more water is needed to produce the feed. The fraction of concentrate feed in the total feed is larger for industrial systems if compared to mixed production systems and larger for mixed systems if compared to grazing systems (Appendix IV — Supplementary Material). The water footprint per kg of concentrate feed is generally larger than for roughages, so that this works to the disadvantage of the total water footprint of animals raised in industrial systems and to the advantage of the total water footprint of animals raised in grazing systems. This effect, however, does not fully compensate for the unfavorable feed conversion efficiencies in grazing systems.

In dairy farming, the total water footprint per unit of product is comparable in all three production systems. For dairy products, the water footprint happens to be the smallest when derived from a mixed system and a bit larger but comparable when obtained from a grazing or industrial system.

### Blue and Grey Water Footprints per Ton of Product

All the above is about comparing the total water footprints of animal products. The picture changes when we focus on the blue and grey water footprint components. With the exception of chicken products, the global average blue and grey water footprints increase from grazing to industrial

production systems (Table 1). The larger blue and grey water footprints for products obtained from industrial production systems are caused by the fact that concentrate feed takes a larger share in the total feed in industrial systems when compared to grazing systems. For beef cattle in grazing systems, the global average share of concentrate feed in total feed is 2%, whereas in industrial systems it is 21%. Mixed systems are generally somewhere in between. Although the feed crops that are contained in the concentrate feed are often to a great extent based on green water, there is a blue water footprint component as well, and the larger the consumption of feed crops compared to roughages, the larger the total amount of blue water consumed. This explains the larger blue water footprint per ton of product in industrial production systems for beef, milk, cheese, and pig, sheep and goat meat. The application and leaching of fertilizers and other agro-chemicals in feed crop production results in the fact that the grey water footprint of animal products from industrial systems, where the dependence on feed crops is the greatest, is larger than for grazing systems. Given the fact that freshwater problems generally relate to blue water scarcity and water pollution and to a lesser extent to competition over green water, industrial systems place greater pressure on ground- and surface-water resources than grazing systems, because grazing systems hardly depend on blue water.

In the case of chicken products (chicken meat and egg), the industrial production system has, on average, a smaller blue and grey water footprint per ton of product compared to the other two production systems. The reason is that chickens strongly rely on concentrate feed in all production systems, intensive or extensive. Broiler chickens in extensive systems have a share of concentrate feed in total feed of 63%, whereas this is 81% in intensive industrial systems. There is still a difference, but the differences in feed composition for both broiler and layer chickens is smaller if compared to the other animal categories. As a result, the relatively unfavorable feed conversion efficiency in extensive systems is not compensated by a more favorable composition of the feed as is in the other animal categories.

The trends in the global averages do not always hold for specific countries. This can be seen from Table 1, which provides country average water footprints for China, India, the Netherlands and the USA as well as global averages. The feed composition varies per production system but also from country to country; as a result, the magnitude of the different components of the water footprint in

the different countries varies significantly from the global mean. Cattle in US grazing systems, for example, are also fed relatively large amounts of grains, predominantly maize, which is irrigated and fertilized, which explains the relatively large blue and grey water footprints of US beef from grazing systems. In China and India, cattle in grazing and mixed systems are mainly fed with pasture and crop residues that have no blue and grey water footprints. Beef from industrial systems in China and India, on the contrary, have a relatively large blue and grey water footprint, which can be explained from the fact that the concentrates in Chinese and Indian industrial systems have a relatively large blue and grey water footprint. This shows that systems that belong to the same category, grazing, mixed or industrial, differ in the feed they provide to animals. Often, the feed ingredients in the different countries have different water footprints, resulting in differences in the total green, blue and grey water footprint of the animal products.

### The Total Water Footprint of Animal Production

During the period 1996–2005, the total water footprint for global animal production was 2,422 Gm<sup>3</sup>/y (87.2% green, 6.2% blue and 6.6% grey water). The largest water footprint for animal production comes from the feed they consume, which accounts for 98% of the total water footprint. Drinking water, service water and feed-mixing water further account the only for 1.1, 0.8 and 0.03% of the total water footprint, respectively. Grazing accounts for the largest share (38%), followed by maize (17%) and fodder crops (8%).

The global water footprint of feed production is 2,376 Gm<sup>3</sup>/y, of which 1,463 Gm<sup>3</sup>/y refers to crops and the remainder to grazing. The estimate of green plus blue water footprint of animal feed production is consistent with estimates of earlier studies (Table 4). The total water footprint of feed crops amounts to 20% of the water footprint of total crop production in the world, which is 7,404 Gm<sup>3</sup>/y (Mekonnen and Hoekstra 2011). The globally aggregated blue water footprint of feed crop production is 105 Gm<sup>3</sup>/y, which is 12% of the blue water footprint of total crop production in the world (Mekonnen and Hoekstra 2011). This means that an estimated 12% of the global consumption of groundwater and surface water for irrigation is for feed, not for food, fibers or other crop products. Globally, the total water footprint of animal production (2,422 Gm<sup>3</sup>/y) constitutes 29% of the



water footprint of total agricultural production (8,363 Gm<sup>3</sup>/y). The latter was calculated as the sum of the global water footprint of crop production (7,404 Gm<sup>3</sup>/y, Mekonnen and Hoekstra 2011), the water footprint of grazing (913 Gm<sup>3</sup>/y, this study) and the direct water footprint of livestock (46 Gm<sup>3</sup>/y, this study).

When we consider the total water footprint per animal category (Table 2), we find that beef cattle have the largest contribution (33%) to the global water footprint of farm animal production, followed by dairy cattle (19%), pigs (19%) and broiler chickens (11%). Mixed production systems

account for the largest share (57.4%) in the global water footprint of animal production. Grazing and industrial production systems account for 20.3 and 22.3%, respectively. In the grazing system, over 97% of the water footprint related to feed comes from grazing and fodder crops and the water footprint is dominantly (94%) green. In the mixed and industrial production systems, the green water footprint forms 87 and 82% of the total footprint, respectively. The blue water footprint in the grazing system accounts for 3.6% of the total water footprint and about 33% of this comes from the drinking and service-water use. In the industrial

**Table 2.** Average Annual Water Footprint of One Animal, per Animal Category (1996–2005)

Animal category	Water footprint of live animal at end of life time (m <sup>3</sup> /ton)	Average animal weight at end of life time (kg)	Average water footprint at end of life time (m <sup>3</sup> /animal) <sup>1</sup>	Average life time (y)	Average annual water footprint of one animal (m <sup>3</sup> /y/animal) <sup>2</sup>	Annual water footprint of animal category (Gm <sup>3</sup> /y)	% of total WF
Beef cattle	7,477	253	1,889	3.0	630	798	33
Dairy cattle			20,558	10	2,056	469	19
Pigs	3,831	102	390	0.75	520	458	19
Broiler chickens	3,364	1.90	6	0.25	26	255	11
Horses	40,612	473	19,189	12	1,599	180	7
Layer chickens			47	1.4	33	167	7
Sheep	4,519	31.3	141	2.1	68	71	3
Goats	3,079	24.6	76	2.3	32	24	1
Total						2,422	100

<sup>1</sup>Calculated by multiplying the water footprint of the live animal at the end of its lifetime in m<sup>3</sup>/ton and the average animal weight.

<sup>2</sup>Calculated by dividing the average water footprint of the animal at the end of its life time by the average life time.

**Table 3.** The Water Footprint of Some Selected Food Products from Vegetable and Animal Origin

Food item	Water footprint per ton (m <sup>3</sup> /ton)				Nutritional content			Water footprint per unit of nutritional value		
	Green	Blue	Grey	Total	Calorie (kcal/kg)	Protein (g/kg)	Fat (g/kg)	Calorie (liter/kcal)	Protein (liter/g protein)	Fat (liter/g fat)
Sugar crops	130	52	15	197	285	0.0	0.0	0.69	0.0	0.0
Vegetables	194	43	85	322	240	12	2.1	1.34	26	154
Starchy roots	327	16	43	387	827	13	1.7	0.47	31	226
Fruits	726	147	89	962	460	5.3	2.8	2.09	180	348
Cereals	1,232	228	184	1,644	3,208	80	15	0.51	21	112
Oil crops	2,023	220	121	2,364	2,908	146	209	0.81	16	11
Pulses	3,180	141	734	4,055	3,412	215	23	1.19	19	180
Nuts	7,016	1367	680	9,063	2,500	65	193	3.63	139	47
Milk	863	86	72	1,020	560	33	31	1.82	31	33
Eggs	2,592	244	429	3,265	1,425	111	100	2.29	29	33
Chicken meat	3,545	313	467	4,325	1,440	127	100	3.00	34	43
Butter	4,695	465	393	5,553	7,692	0.0	872	0.72	0.0	6.4
Pig meat	4,907	459	622	5,988	2,786	105	259	2.15	57	23
Sheep/goat meat	8,253	457	53	8,763	2,059	139	163	4.25	63	54
Beef	14,414	550	451	15,415	1,513	138	101	10.19	112	153

system, the blue water footprint accounts for 8% of the total water footprint.

### Water Footprint of Animal versus Crop Products per Unit of Nutritional Value

As a general picture we find that animal products have a larger water footprint per ton of product than crop products. As we see from Table 3, the global average water footprint per ton of crop increases from sugar crops (roughly 200 m<sup>3</sup>/ton) and vegetables (~300 m<sup>3</sup>/ton) to pulses (~4,000 m<sup>3</sup>/ton) and nuts (~9,000 m<sup>3</sup>/ton). For animal products, the water footprint increases from milk (~1,000 m<sup>3</sup>/ton) and egg (~3,300 m<sup>3</sup>/ton) to beef (~15,400 m<sup>3</sup>/ton). Also when viewed from a caloric standpoint, the water footprint of animal products is larger than for crop products. The average water footprint per calorie for beef is 20 times larger than for cereals and starchy roots. When we look at the water requirements for protein, we find that the water footprint per gram of protein for milk, eggs and chicken meat is about 1.5 times larger than for pulses. For beef, the water footprint per gram of protein is 6 times larger than for pulses. In the case of fat, we find that butter has a relatively small water footprint per gram of fat, even lower than for oil crops. All other animal products, however, have larger water footprints per gram of fat when compared to oil crops. The general conclusion is that from a freshwater resource perspective, it is more efficient to obtain calories, protein and fat through crop products than animal products. A note should be made here, however, that types of proteins and fats differ across the different products.

Meat-based diets have a larger water footprint compared to a vegetarian diet. We explored the implications of our results by examining the diet within one developed country—the USA—to determine the effect of diet composition on water footprint. Meat contributes 37% towards the food-related water footprint of an average American citizen. Replacing all meat by an equivalent amount of crop products such as pulses and nuts will result in a 30% reduction of the food-related water footprint of the average American citizen.

## DISCUSSION

The result of the current study can be compared with results from earlier studies. However, only a few other studies on the water footprint per unit of animal product and the total water footprint of animal production are available. We will first

compare our estimates of the water footprints per ton of animal product with two earlier studies and subsequently we will compare the total water footprint related to animal feed production with five earlier studies.

The rough estimates made by Pimentel and others (2004) for the water footprints of beef and meat from sheep, pigs and chickens are partly very close to our global estimates but partly also quite different. As Pimentel's studies did not include the grey water footprint component, we will compare only the green plus blue water footprint from our estimate with that of Pimentel and others (2004). They report a water footprint of chicken meat of 3,500 m<sup>3</sup>/ton, which is only a bit lower than our global average estimate of 3,858 m<sup>3</sup>/ton. They report a water footprint of pig meat of 6,000 m<sup>3</sup>/ton, which is a slightly larger than our global average estimate. For sheep meat, they report a water footprint of 51,000 m<sup>3</sup>/ton and for beef 43,000 m<sup>3</sup>/ton, values that are very high when compared to our estimates (10,400 m<sup>3</sup>/ton for sheep meat and 15,400 m<sup>3</sup>/ton for beef). We consider the values reported by Pimentel as rough estimates, for which the underlying assumptions have not been spelled out, so that it is difficult to explain differences with our estimates.

The study of Chapagain and Hoekstra (2004) is the only publication with global estimates of the water footprint of animal products with specifications by country. The current study gives better estimates due to a refined assessment as explained in the introductory section, so that the previous estimates cannot be used for validation of the estimates from the current study. However, it is worth comparing the results from the two studies to see the differences. At a global level, the estimated water footprints per ton of animal and animal product compare very well with the estimates from Chapagain and Hoekstra (2004), with an  $r^2$  of 0.88 (Figure 1A). The good agreement at the global level between the two studies is probably that the global average water footprints for various feed ingredients are very close in the two studies. The trend line in Figure 1A is slightly above 1, which is caused by our higher estimates for the water footprints of sheep and goat meat. For most other animal products, the current study gives a bit lower estimates than the earlier study.

When we compare our estimates with Chapagain and Hoekstra (2004) at a country level, more differences are found (Figure 1B–F). The two studies show a relatively good agreement for pig meat, chicken meat and egg—although for egg the earlier

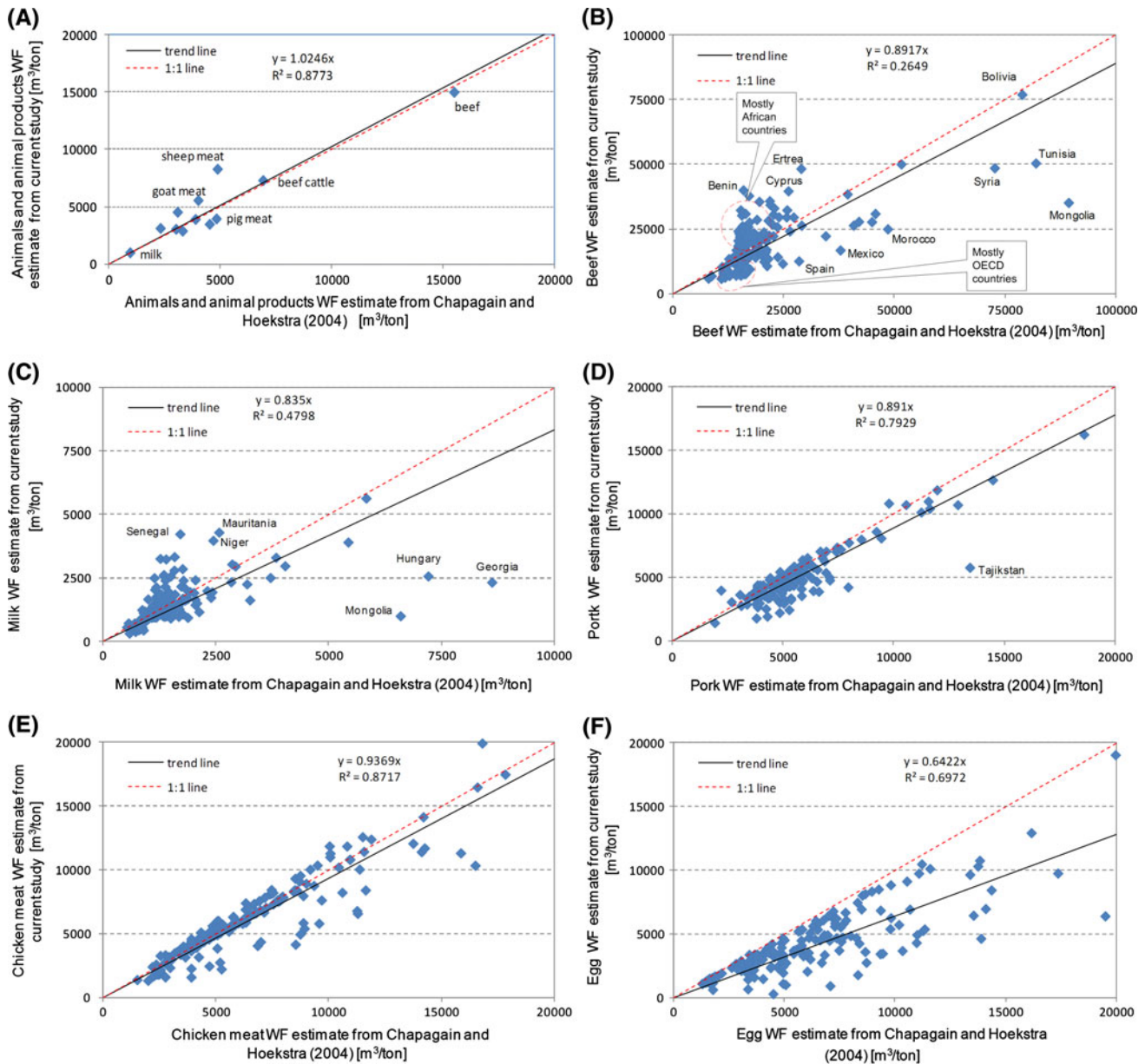


Figure 1. Comparison of average water footprint of **A** animals and animal products at global level, and **B** beef, **C** milk, **D** pig meat, **E** chicken meat and **F** egg at the country level as estimated in the current study and Chapagain and Hoekstra (2004). From the current study we show here the sum of green and blue water footprints, excluding the grey water footprint, because that component was excluded in the 2004 study.

study systematically gives higher numbers—but little agreement for beef and dairy products. In general we find that Chapagain and Hoekstra (2004) underestimated the water footprints for African countries and overestimated the water footprints for OECD countries. As already pointed out in the introductory section, there are three main reasons why the estimates from the current study can differ from the 2004-study and are considered more accurate. First, the current study is

based on better data for the estimation of the quantity and composition of animal feed. Second, the current study takes into consideration the relative presence of the three production systems per country and accounts for the differences between those systems. Third, we have estimated the water footprints of the various feed ingredients more accurately by using a high-resolution grid-based crop water use model, including the effect of

water deficits where they occur, making explicit distinction between the green and blue water footprint components and including the grey water footprint component.

As one can see in the overview presented in Table 4, our estimate of the total evaporative water use (green plus blue water footprint) for producing animal feed (2,217 Gm<sup>3</sup>/y) is 3% larger than the estimate by De Fraiture and others (2007) and 5% smaller than the estimate by Zimmer and Renault (2003). Our estimate of the global consumptive water use for producing feed crops (1,304 Gm<sup>3</sup>/y) does not significantly differ from the estimate by De Fraiture and others (2007). Our estimate of global consumptive water use for grazing (913 Gm<sup>3</sup>/y) is 9% larger than the estimate by De Fraiture and others (2007). The differences with three other studies that reported on the consumptive water use related to grazing are much larger, which is caused by another definition applied. Postel and others (1996) estimated the water evaporated from grazing land to be 5,800 Gm<sup>3</sup>/y. In more recent studies, Rost and others (2008) and Hanasaki and others (2010) estimate the total evapotranspiration from grazing land to be 8,258 and 12,960 Gm<sup>3</sup>/y, respectively. However, unlike the current study, the estimates in these three studies refer to the total evapotranspiration from grazing lands rather than to the evaporation related to the grass actually consumed. This makes a comparison of our results with theirs unjustified. According to De Fraiture and others (2007), reported 'grazing lands' are only partly actually grazed. Besides, the harvest efficiency—the fraction of grass actually consumed by the animal compared to the standing biomass—is quite small. In a recent study in the USA, Smart and others (2010) showed that, depending on the animal stocking density, harvest efficiencies reach between 14 and 38%.

There are several uncertainties in this study in the quantification of the water footprint of animals and animal products. Due to a lack of data, many assumptions have to be made. There are a number of uncertainties in the study, but particularly two types of uncertainty may have a major effect on the final output of the study. First, data on animal distribution per production system per country for OECD countries is not available. Wint and Robinson (2007) provide livestock distributions per production system per country for developing countries but not for OECD countries. For these countries we are forced to use the data from Seré and Steinfeld (1996), which provide livestock distribution per economic region. These data have the limitation that they are not country-specific and may lead to errors in distribution of animals into the different production system for some countries. The second major uncertainty is related to the precise composition of feed per animal category per country. Such data are not directly available so that we had to infer these data by combining different data sources and a number of assumptions. Despite the uncertainties in the data used, the order of magnitudes of the figures presented are unlikely to be affected. Similarly, the general findings regarding the overall comparison between different animals and different production systems and the comparison between animal versus crop products is not likely to change with better data.

Although the scope of this study is very comprehensive, there are many issues that have been left out. One issue is that we neglected the indirect water footprints of materials used in feed production and animal raising. We expect that this may add at most a few percent to the water footprint estimates found in this study (based on Hoekstra and others 2011). In the grey water footprint

**Table 4.** Comparison of the Results of the Current Study with the Results from Previous Studies

Study	Period	Global water footprint <sup>1</sup> related to animal feed production (Gm <sup>3</sup> /y)		
		Grazing	Crops	Total
Postel and others (1996)	1995	5,800	–	–
Zimmer and Renault (2003)	2000	–	–	2,340
De Fraiture and others (2007)	2000	840	1,312	2,152
Rost and others (2008)	1971–2002	8,258	–	–
Hanasaki and others (2010)	1985–1999	12,960	–	–
Current study <sup>1</sup>	1996–2005	913	1,304	2,217

<sup>1</sup>The numbers in the table, also the ones from the current study, refer to the green plus blue water footprint. None of the previous studies included the grey water footprint component.



estimations we have looked at the water pollution by nitrogen-fertilizers only, excluding the potential pollution by other fertilizer components or by pesticides or other agro-chemicals. Besides, we have not quantified the grey water footprint coming from animal wastes, which is particularly relevant for industrial production systems. Neglecting nitrogen leaching and runoff from manure underestimates the grey water footprint related to animal production. The magnitude of this underestimate can roughly be shown by estimating the grey water footprint related to manure based on the global nitrogen input from manure found in the literature. Global nitrogen input from manure for the year 2000 varies from 17 million tons per year (Liu and others 2010) to 92 million tons per year (Bouwman and others 2011). Based on the relative contribution of manure to the total nitrogen input and the global total nitrogen leaching/runoff, the nitrogen leaching/runoff from manure can be estimated at 6.0–14.5 million tons per year. This amount of nitrogen leached/runoff to the freshwater systems can be translated into a grey water footprint of 600–1,450 Gm<sup>3</sup>/y. The grey water footprint is more significant in the intensive animal production system, which often generates an amount of waste that cannot be fully recycled on the nearby land. The large amount of waste generated in a concentrated place can seriously affect freshwater systems (FAO 2005; Steinfeld and others 2006; Galloway and others 2007). Finally, by focusing on freshwater appropriation, the study obviously excludes many other relevant issues in farm animal production, such as micro- and macro-cost of production, livelihood of smallholder farmers, animal welfare, public health and environmental issues other than freshwater.

## CONCLUSION

In conclusion, we provide a detailed estimate of the water footprint of farm animals and animal products per production system and per country. The results show that the blue and grey water footprints of animal products are the largest for industrial systems (with an exception for chicken products). The water footprint of any animal product is larger than the water footprint of crop products with equivalent nutritional value. Finally, 29% of the total water footprint of the agricultural sector in the world is related to the production of animal products; one-third of the global water footprint of animal production is related to beef cattle.

The global meat production has almost doubled in the period 1980–2004 (FAO 2005) and this trend

is likely to continue given the projected doubling of meat production in the period 2000–2050 (Steinfeld and others 2006). To meet this rising demand for animal products, the on-going shift from traditional extensive and mixed farming to industrial farming systems is likely to continue. Because of the larger dependence on concentrate feed in industrial systems, this intensification of animal production systems will result in increasing blue and grey water footprints per unit of animal product. The pressure on the global freshwater resources will thus increase both because of the increasing meat consumption and the increasing blue and grey water footprint per unit of meat consumed.

Managing the demand for animal products by promoting a dietary shift away from a meat-rich diet will be an inevitable component in the environmental policy of governments. In countries where the consumption of animal products is still quickly rising, one should critically look at how this growing demand can be moderated. On the production side, it would be wise to include freshwater implications in the development of animal farming policies, which means that particularly feed composition, feed water requirements and feed origin need to receive attention. Animal farming puts the lowest pressure on freshwater systems when dominantly based on crop residues, waste and roughages. Policies aimed to influence either the consumption or production side of farm animal products will generally entail various sorts of socio-economic and environmental tradeoffs (Herrero and others 2009; Pelletier and Tyedmers 2010). Therefore, policies aimed at reducing the negative impacts of animal production and consumption should be able to address these potential tradeoffs. Policies should not affect the required increase in food security in less developed countries neither the livelihood of the rural poor should be put in danger through intensification of animal farming.

This study provides a rich data source for further studies on the factors that determine how animal products put pressure on the global water resources. The reported incidents of groundwater depletion, rivers running dry and increasing levels of pollution form an indication of the growing water scarcity (Gleick 1993; Postel 2000; UNESCO 2009). As animal production and consumption play an important role in depleting and polluting the world's scarce freshwater resources, information on the water footprint of animal products will help us understand how we can sustainably use the scarce freshwater resources.



## OPEN ACCESS

This article is distributed under the terms of the Creative Commons Attribution Noncommercial License which permits any noncommercial use, distribution, and reproduction in any medium, provided the original author(s) and source are credited.

## REFERENCES

- Aldaya MM, Martinez-Santos P, Llamas MR. 2010. Incorporating the water footprint and virtual water into policy: Reflections from the Mancha Occidental Region, Spain. *Water Res Manag* 24(5):941–58.
- Bouwman AF, Van der Hoek KW, Eickhout B, Soenario I. 2005. Exploring changes in world ruminant production systems. *Agric Syst* 84:121–53.
- Bouwman L, Goldewijk KK, Van Der Hoek KW, Beusen AHW, Van Vuuren DP, Willems J, Rufino MC, Stehfest, E. 2011. Exploring global changes in nitrogen and phosphorus cycles in agriculture induced by livestock production over the 1900–2050 period. *Proceedings of the National Academy of Sciences USA* doi:10.1073/pnas.1012878108.
- Capper JL, Cady RA, Bauman DE. 2009. The environmental impact of dairy production: 1944 compared with 2007. *J Animal Sci* 87(6):2160–7.
- Chapagain AK, Hoekstra AY. 2004. Water footprints of nations. Value of Water Research Report Series No. 16. Available online: [[www.waterfootprint.org/Reports/Report16Vol1.pdf](http://www.waterfootprint.org/Reports/Report16Vol1.pdf)]. Delft, the Netherlands: UNESCO-IHE.
- Chapagain AK, Hoekstra, AY. 2003. Virtual water flows between nations in relation to trade in livestock and livestock products. Value of Water Research Report Series No. 13. Available online: [[www.waterfootprint.org/Reports/Report13.pdf](http://www.waterfootprint.org/Reports/Report13.pdf)]. Delft, the Netherlands: UNESCO-IHE.
- Chapagain AK, Hoekstra AY, Savenije HHG, Gautam R. 2006. The water footprint of cotton consumption: an assessment of the impact of worldwide consumption of cotton products on the water resources in the cotton producing countries. *Ecol Econom* 60(1):186–203.
- De Fraiture C, Wichelns D, Rockström J, Kemp-Benedict E, Eriyagama N, Gordon LJ, Hanjra MA, Hoogeveen J, Huber-Lee A, Karlberg L. 2007. Looking ahead to 2050: scenarios of alternative investment approaches. In: Molden D, Ed. *Water for food, water for life: a comprehensive assessment of water management in agriculture*. London, Colombo: Earthscan, International Water Management Institute. pp 91–145.
- FAO. 2003. Technical conversion factors for agricultural commodities. Available online: [[www.fao.org/fileadmin/templates/ess/documents/methodology/tcf.pdf](http://www.fao.org/fileadmin/templates/ess/documents/methodology/tcf.pdf)]. Rome: Food and Agriculture Organization.
- FAO. 2005. Livestock policy brief 02. Rome: Food and Agriculture Organization.
- FAO. 2009. FAOSTAT database. Available online: [<http://faostat.fao.org>]. Rome: Food and Agriculture Organization.
- Fraser D. 2008. Toward a global perspective on farm animal welfare. *Appl Animal Behav Sci* 113(4):330–9.
- Galloway J, Burke M, Bradford GE, Naylor R, Falcon W, Chapagain AK, Gaskell JC, McCullough E, Mooney HA, Oleson KLL, Steinfeld H, Wassenaar T, Smil V. 2007. International trade in meat: the tip of the pork chop. *Ambio* 36:622–9.
- Gerbens-Leenes W, Hoekstra AY, Van der Meer TH. 2009. The water footprint of bioenergy. *Proc Natl Acad Sci* 106(25):10219–23.
- Gleick PH, Ed. 1993. *Water in crisis: a guide to the world's fresh water resources*. Oxford: Oxford University Press. p 473.
- Gustafson RH, Bowen RE. 1997. Antibiotic use in animal agriculture. *J Appl Microbiol* 83(5):531–41.
- Hanasaki N, Inuzuka T, Kanae S, Oki T. 2010. An estimation of global virtual water flow and sources of water withdrawal for major crops and livestock products using a global hydrological model. *J Hydrol* 384:232–44.
- Hendy CRC, Kleih U, Crawshaw R, Phillips M. 1995. Livestock and the environment finding a balance: Interactions between livestock production systems and the environment, Impact domain: concentrate feed demand. Available at: [[www.fao.org/wairdocs/lead/x6123e/x6123e00.htm#Contents](http://www.fao.org/wairdocs/lead/x6123e/x6123e00.htm#Contents)]. Rome: Food and Agriculture Organization.
- Herrero M, Thornton PK, Gerber P, Reid RS. 2009. Livestock, livelihoods and the environment: understanding the trade-offs. *Curr Opin Environ Sustain* 1(2):111–20.
- Hoekstra AY. 2010. The water footprint of animal products. In: D'Silva J, Webster J, Eds. *The meat crisis: developing more sustainable production and consumption*. London: Earthscan. p 22–33.
- Hoekstra AY, Chapagain AK. 2007. Water footprints of nations: water use by people as a function of their consumption pattern. *Water Res Manag* 21(1):35–48.
- Hoekstra AY, Chapagain AK. 2008. *Globalization of water: Sharing the planet's freshwater resources*. Oxford: Blackwell Publishing. p 208.
- Hoekstra AY, Chapagain AK, Aldaya MM, Mekonnen MM. 2011. *The water footprint assessment manual: Setting the global standard*. London: Earthscan. p 203.
- Keyzer MA, Merbis MD, Pavel IFPW, Van Wesenbeeck CFA. 2005. Diet shifts towards meat and the effects on cereal use: Can we feed the animals in 2030? *Ecol Econom* 55(2):187–202.
- Lewis JM, Klopfenstein TJ, Stock RA, Nielsen MK. 1990. Evaluation of intensive vs extensive systems of beef production and the effect of level of beef cow milk production on post-weaning performance. *J Animal Sci* 68(8):2517–24.
- Liu J, You L, Amini M, Obersteiner M, Herrero M, Zehnder AJB, Yang H. 2010. A high-resolution assessment on global nitrogen flows in cropland. *Proc Natl Acad Sci* 107(17):8035–40.
- McAlpine CA, Etter A, Fearnside PM, Seabrook L, Laurance WF. 2009. Increasing world consumption of beef as a driver of regional and global change: A call for policy action based on evidence from Queensland (Australia), Colombia and Brazil. *Global Environ Change* 19(1):21–33.
- McEwen SA. 2006. Antibiotic use in animal agriculture: what have we learned and where are we going? *Animal Biotechnol* 17(2):239–50.
- Mekonnen MM, Hoekstra AY. 2010. A global and high-resolution assessment of the green, blue and grey water footprint of wheat. *Hydrol Earth Syst Sci* 14(7):1259–76.
- Mekonnen MM, Hoekstra AY. 2011. The green, blue and grey water footprint of crops and derived crop products. *Hydrol Earth Syst Sci* 15(5):1577–600.
- Myers N, Kent J. 2003. New consumers: the influence of affluence on the environment. *P Natl Acad Sci USA* 100(8):4963–8.
- Naylor R, Steinfeld H, Falcon W, Galloway J, Smil V, Bradford E, Alder J, Mooney H. 2005. Agriculture: losing the links between livestock and land. *Science* 310(5754):1621–2.

- Nepstad DC, Stickler CM, Almeida OT. 2006. Globalization of the Amazon soy and beef industries: opportunities for conservation. *Conserv Biol* 20(6):1595–603.
- Peden D, Tadesse G, Misra AK, Ahmed FA, Astatke A, Ayalneh W, Herrero M, Kiuwuwa G, Kumsa T, Mati B, Mpairwe D, Wassenaar T, Yimegnihal A. 2007. Water and livestock for human development. In: Molden D, Ed. *Water for food, water for life: a comprehensive assessment of water management in agriculture*. London: Earthscan International Water Management Institute. p 485–514.
- Pelletier N, Tyedmers P. 2010. Forecasting potential global environmental costs of livestock production 2000–2050. *Proc Natl Acad Sci USA* 107(43):18371–4.
- Pimentel D, Berger B, Filiberto D, Newton M, Wolfe B, Karabinakis E, Clark S, Poon E, Abbott E, Nandagopal S. 2004. Water resources: agricultural and environmental issues. *Bioscience* 54(10):909–18.
- Postel SL. 2000. Entering an era of water scarcity: the challenges ahead. *Ecol Appl* 10(4):941–8.
- Postel SL, Daily GC, Ehrlich PR. 1996. Human appropriation of renewable freshwater. *Science* 271(5250):785–8.
- Renault D, Wallender WW. 2000. Nutritional water productivity and diets. *Agric Water Manag* 45:275–96.
- Rost S, Gerten D, Bondeau A, Lucht W, Rohwer J, Schaphoff S. 2008. Agricultural green and blue water consumption and its influence on the global water system. *Water Resource Research* 44:W09405. doi:10.1029/2007WR006331.
- Seré C, Steinfeld H. 1996. World livestock production systems: current status, issues and trends. Animal production and health paper 127. Rome: Food and Agriculture Organization.
- Smart AJ, Derner JD, Hendrickson JR, Gillen RL, Dunn BH, Mousel EM, Johnson PS, Gates RN, Sedivec KK, Harmony KR, Volesky JD, Olson KC. 2010. Effects of grazing pressure on efficiency of grazing on North American Great Plains rangelands. *Rangeland Ecol Manag* 63(4):397–406.
- Smith DL, Harris AD, Johnson JA, Silbergeld EK, Morris JG. 2002. Animal antibiotic use has an early but important impact on the emergence of antibiotic resistance in human commensal bacteria. *Proc Natl Acad Sci USA* 99(9):6434–9.
- Steinfeld H, Gerber P, Wassenaar T, Castel V, Rosales M, de Haan C. 2006. *Livestock's long shadow: environmental issues and options*. Rome: Food and Agriculture Organization. p 390.
- Sutton MA, Oenema O, Erisman JW, Leip A, Van Grinsven H, Winiwarter W. 2011. Too much of a good thing. *Nature* 472(7342):159–61.
- Thompson PB, Ed. 2008. The ethics of intensification: Agricultural development and cultural change. The International Library of Environmental, Agricultural and Food Ethics Vol. 16. New York: Springer. doi:10.1007/978-1-4020-8722-6.
- Tilman D, Fargione J, Wolff B, D'antonio C, Dobson A, Howarth R, Schindler D, Schlesinger WH, Simberloff D, Swackhamer D. 2001. Forecasting agriculturally driven global environmental change. *Science* 292(5515):281–4.
- UNESCO. 2009. *Water in a changing world: The United Nations World Water Development Report 3*. Paris: UNESCO Publishing, Earthscan.
- Van Breugel P, Herrero M, Van De Steeg J, Peden D. 2010. Livestock water use and productivity in the Nile Basin. *Ecosystems* 13(2):205–21.
- Wheeler RO, Cramer GL, Young KB, Ospina E. 1981. The world livestock product, feedstuff, and food grain system, an analysis and evaluation of system interactions throughout the world, with projections to 1985 Little Rock (AK): Winrock International.
- Wint GRW, Robinson TP. 2007. *Gridded livestock of the world 2007*. Rome: Food and Agriculture Organization.
- Witte W. 1998. Medical consequences of antibiotic use in agriculture. *Science* 279(5353):996–7.
- Zimmer D, Renault D. 2003. Virtual water in food production and global trade: review of methodological issues and preliminary results. In: Hoekstra AY, Ed. *Virtual water trade: Proceedings of the International Expert Meeting on Virtual Water Trade*. Value of Water Research Report Series No.12. Available at [<http://www.waterfootprint.org/Reports/Report12.pdf>] Delft, The Netherlands: UNESCO-IHE. p93-109.

**FOR ONLINE PUBLICATION ONLY**

**Appendix I: Feed Conversion Efficiencies – in kg of feed (dry mass) per kg of output – per Animal Category and Region**

Animal category	Animal production system	Central and South America	East Asia	East Europe and CIS*	North America	Oceania	South Asia	Southeast Asia	Sub-Saharan Africa	West Asia and North Africa	West Europe	World
Beef cattle	Grazing	76	90	48	40	46	280	163	110	97	59	70
	Mixed	63	61	31	24	36	121	90	56	41	53	52
	Industrial	21	35	9	4	11	33	25	14	13	16	19
	Overall	56	55	32	25	36	108	71	72	54	28	47
Dairy cattle	Grazing	3.8	4.8	2.6	2.3	1.8	6.5	7.4	4.1	3.3	3.3	3.5
	Mixed	2.6	1.8	2.0	1.0	1.3	1.9	3.5	3.2	1.9	1.2	1.6
	Industrial	0.0	0.9	1.3	0.5	0.7	0.0	0.0	0.0	0.0	0.6	1.1
	Overall	3.2	2.0	1.7	1.1	1.4	2.2	3.7	3.8	2.0	1.5	1.9
Broiler chickens	Grazing	9.7	9.8	8.0	13.3	13.3	14.0	8.6	7.9	8.9	14.3	9.0
	Mixed	4.5	4.7	3.6	5.9	6.0	6.4	5.3	4.4	4.0	6.4	4.9
	Industrial	2.4	2.4	2.3	3.0	3.1	2.8	2.5	2.2	2.0	3.3	2.8
	Overall	4.5	4.2	4.7	3.4	3.4	5.8	4.7	4.9	4.8	3.6	4.2
Layer chickens	Grazing	10.2	8.0	11.3	8.0	6.7	10.6	9.5	8.3	9.7	8.0	9.3
	Mixed	4.5	4.3	5.1	3.8	3.2	4.7	4.2	3.9	4.6	3.9	4.4
	Industrial	2.4	2.3	2.7	2.1	1.8	2.6	2.3	1.8	2.3	2.1	2.3
	Overall	3.3	3.1	3.5	2.3	1.9	3.6	3.2	4.0	3.4	2.3	3.1
Pigs	Grazing	12.3	14.5	9.3	9.3	14.0	8.0	12.2	8.4	15.4	13.7	11.3
	Mixed	6.1	6.9	4.7	5.1	6.7	6.2	6.6	7.3	8.2	6.6	6.5
	Industrial	4.0	4.2	3.2	3.2	4.0	4.6	4.2	4.1	4.4	4.0	3.9
	Overall	6.1	6.4	5.7	4.1	5.3	5.8	6.1	7.0	6.2	5.2	5.8
Sheep and goats	Grazing	113.8	49.2	95.8	33.0	40.3	53.5	36.4	44.3	33.0	0.0	49.6
	Mixed	73.5	21.1	46.6	27.1	27.1	20.3	20.9	26.9	16.7	33.1	25.8
	Industrial	29.7	13.6	23.3	0.0	0.0	10.6	8.3	9.7	7.3	0.0	13.3
	Overall	72.5	24.8	62.1	30.3	34.2	21.8	18.4	30.2	21.2	33.1	30.2

The output weight refers to the weight of carcass (for beef cattle, broiler chickens, pigs, sheep and goats), weight of milk (for dairy cattle) or weight of eggs (for layer chickens)

\* CIS represents The Commonwealth of Independent States.

**Appendix II: Estimated Consumption of Feed per Animal Category and World Region (103 ton dry mass/year)**

Type of feed	Animal category	Central and Southern America	Eastern Asia	Eastern Europe and CIS	Northern America	Oceania	South Asia	South East Asia	Sub-Saharan Africa	West and Africa	Asia North	Western Europe	Total
Concentrate feed	Beef cattle	15046	11398	13347	46803	1013	9249	8485	10265	7012	19342	141959	
	Dairy cow	17725	17720	60510	35667	3161	22970	1221	3687	21608	64470	248739	
	Sheep and goats	138	101	400	20	88	200	45	420	2045	136	3595	
	Pigs	14290	105389	32491	39085	1024	1015	11326	2376	570	81262	288829	
	Broiler chickens	34278	32931	11312	29311	1551	9624	15440	6618	19332	20153	180551	
	Layer chickens	10614	52641	12444	7205	229	9021	6492	4485	8858	10046	122035	
	Total concentrate	92091	220181	130503	158091	7066	52078	43009	27851	59426	195410	985707	
Roughage	Beef cattle	768202	310641	158432	276180	95208	431969	85698	216172	117142	198238	2657881	
	Dairy cow	173954	30669	105111	57026	28651	71609	5327	40678	36897	126231	676153	
	Sheep and goats	29701	69732	44179	3549	39848	28570	2883	37611	44647	37978	338697	
	Pigs	17534	169643	10378	2827	1642	1890	15949	2562	110	12122	234657	
	Broiler chickens	22189	10082	3148	21094	1050	223	3153	1327	759	4426	67453	
	Layer chickens	5916	16116	3335	5185	155	209	1326	508	363	2435	35549	
	Total roughage	1017496	606884	324582	365861	166553	534469	114336	298859	199918	381431	4010390	
Total feed		1109587	827065	455085	523952	173620	586547	157346	326710	259344	576841	4996097	

**Appendix III: Estimated Consumption of Feed per Production System and World Region (103 ton dry mass/year)**

Type of feed	Animal production system	Central and South America	East Asia	East Europe and CIS	North America	Oceania	South Asia	Southeast Asia	Sub-Saharan Africa	West Asia and North Africa	West Europe	Total
Concentrate feed	Grazing	14119	4248	20886	10350	538	1762	983	8126	15557	13377	89946
	Mixed	41138	121794	71328	93612	3672	39466	26732	16729	33943	97545	545958
	Industrial	36834	94139	38290	54129	2856	10850	15294	2996	9926	84488	349803
Roughage	Grazing	383782	80502	147434	84664	52895	52056	8643	174068	104204	72777	1161026
	Mixed	566853	462190	137533	261445	110402	459372	99482	120693	90178	236640	2544789
	Industrial	66861	64192	39615	19751	3256	23041	6211	4098	5536	72013	304575
Total feed		1109587	827065	455085	523952	173620	586547	157346	326710	259344	576841	4996097



**Appendix IV: Fraction of Concentrate Feed in Total Feed Dry Matter, per Animal Category, Production System and Region**

Animal category	Animal production system	Central and South America	East Asia	East Europe and CIS	North America	Oceania	South Asia	Southeast Asia	Sub-Saharan Africa	West Asia and North Africa	West Europe	Total
Beef cattle	Grazing	0.002	0.000	0.028	0.065	0.004	0.000	0.047	0.010	0.028	0.009	0.016
	Mixed	0.012	0.008	0.054	0.158	0.010	0.010	0.036	0.083	0.061	0.020	0.039
	Industrial	0.125	0.150	0.574	0.753	0.103	0.213	0.486	0.260	0.407	0.204	0.211
	Overall	0.019	0.035	0.078	0.145	0.011	0.021	0.090	0.045	0.056	0.089	0.051
Dairy cattle	Grazing	0.033	0.099	0.262	0.163	0.040	0.045	0.027	0.064	0.244	0.148	0.086
	Mixed	0.178	0.422	0.267	0.454	0.112	0.294	0.205	0.135	0.391	0.417	0.321
	Industrial	0.000	0.961	0.620	1.000	0.272	0.000	0.000	0.000	0.000	0.929	0.665
	Overall	0.092	0.366	0.365	0.385	0.099	0.243	0.186	0.083	0.369	0.338	0.269
Broiler chickens	Grazing	0.412	0.561	0.686	0.244	0.269	0.877	0.642	0.699	0.934	0.372	0.633
	Mixed	0.570	0.735	0.863	0.325	0.359	0.983	0.812	0.925	0.992	0.485	0.701
	Industrial	0.998	1.000	1.000	0.650	0.660	1.000	0.999	1.000	1.000	0.909	0.810
	Overall	0.607	0.766	0.782	0.582	0.596	0.977	0.830	0.833	0.962	0.820	0.728
Layer chickens	Grazing	0.185	0.374	0.214	0.243	0.249	0.723	0.545	0.781	0.773	0.333	0.502
	Mixed	0.238	0.617	0.573	0.324	0.332	0.964	0.726	0.995	0.967	0.444	0.636
	Industrial	1.000	0.978	1.000	0.647	0.664	1.000	1.000	1.000	1.000	0.897	0.932
	Overall	0.642	0.766	0.789	0.582	0.596	0.977	0.830	0.898	0.961	0.805	0.774
Pigs	Grazing	0.143	0.100	0.539	0.370	0.003	0.073	0.107	0.296	0.600	0.327	0.298
	Mixed	0.349	0.255	0.918	0.891	0.008	0.182	0.313	0.483	0.924	0.787	0.425
	Industrial	0.984	1.000	1.000	1.000	0.905	0.984	0.960	0.955	0.947	0.997	0.995
	Overall	0.449	0.383	0.758	0.933	0.384	0.349	0.415	0.481	0.838	0.870	0.552
Sheep	Grazing	0.001	0.000	0.003	0.002	0.001	0.000	0.000	0.003	0.011	0.000	0.004
	Mixed	0.006	0.003	0.014	0.011	0.004	0.017	0.021	0.032	0.051	0.004	0.011
	Industrial	0.029	0.007	0.042	0.000	0.000	0.065	0.074	0.109	0.381	0.000	0.092
	Overall	0.006	0.002	0.009	0.006	0.002	0.017	0.024	0.019	0.051	0.004	0.013
Goats	Grazing	0.000	0.000	0.000	0.002	0.000	0.000	0.000	0.000	0.001	0.000	0.000
	Mixed	0.000	0.000	0.001	0.014	0.000	0.002	0.004	0.002	0.002	0.000	0.001
	Industrial	0.002	0.001	0.009	0.094	0.000	0.009	0.036	0.016	0.058	0.000	0.011
	Overall	0.001	0.000	0.002	0.021	0.000	0.002	0.008	0.002	0.006	0.000	0.002

## Appendix V: Overview of data sources

- **Animal production systems:** Seré and Steinfeld (1996) have developed a classification of animal production systems based on agro-ecology, the distinction between pastoral, mixed and landless systems and on the presence of irrigation or not. They distinguish eleven animal production systems grouped under three headings: grazing (extensive), mixed and industrial (intensive). In this study we use the schematization into these three production systems.
- **Feed conversion efficiencies:** For ruminants, the feed conversion efficiencies were estimated as explained in method section. For non-ruminants (pigs, broiler and egg laying chickens), feed conversion efficiencies per animal category, per production system and per economic region were obtained from Hendy and others (1995). For both ruminants and non-ruminants, the feed conversion efficiency data were scaled such that at the level of world regions they match the efficiencies as reported in Bouwman and others (2005).
- **Annual production of animal products:** Data on the annual production of animal products (beef, pig meat, sheep meat, goat meat, chicken meat, milk and egg) per production system for different economic regions were obtained from Seré and Steinfeld (1996). Production data per product and country for the period 1996-2005 were obtained from FAOSTAT (FAO 2009). The two data sources have been combined to derive production data per animal category, production system and per country for the period 1996-2005. We scaled the production data per production system such that at national level, the production aggregated over the different production systems equals the production as reported in FAO (2009) for the period 1996-2005.
- **Number of animals:** Seré and Steinfeld (1996) provide the total animal population for the different production systems for the year 1995 for a number of geographic regions in the world. Wint and Robinson (2007) provide the total animal population for the year 2005 for the different production systems for developing countries. We have combined the two sources to obtain number of animals per animal category, per production system and per country. We scaled the numbers such that at national level, the number of animals aggregated over the different production systems equal the numbers as reported in FAO (2009) for the period 1996-2005.
- **Number of slaughtered animals and animal off-take rates:** The annual number of slaughtered animals for beef cattle, pigs, sheep, goats and broiler chickens per country have been taken from FAO (2009). The animal off-take rates at national level have been derived from the same source by dividing the annual number of slaughtered animals by the total population. The off-take rate for the grazing system was assumed to be 90% of the national average off-take rate for the animal category considered (Bouwman and others 2005). Per country, the off-take rate for the mixed and industrial production systems were scaled until the total number of slaughtered animals per animal category equalled the value provided by FAO (2009).
- **Animal live weight:** Hendy and others (1995) provide live weight of ruminant animals (beef cattle, dairy cattle, sheep and goat) by production system and economic region. FAO (2003) give animal live weight for cattle, pigs, sheep, goats and chickens. We combined these two sources, taking advantage of the fact that Hendy and others (1995) specify data per production system (but not per country) and FAO (2003) provides data per country (but not per system).
- **Carcass weight as percentage of live weight:** FAO (2003) provides carcass weight as percentage of live weight for the different animal categories per country.
- **Ruminant animals daily feed intake rate:** Daily feed intake rate for ruminant animals (beef cattle, dairy cattle, sheep and goat) was obtained from Hendy and others (1995).
- **Share of concentrate feed in total animal feed:** The contribution of concentrate feeds such as cereals, oil-meals, roots and other crop products in the total feed composition was obtained from Hendy and others (1995) and Bouwman and others (2005).
- **Composition of the concentrate feed:** The composition of concentrate feed per animal category was estimated following mainly Wheeler and others (1981). In addition, we used Steinfeld and others (2006) for data on the relative composition of poultry and pigs feed for major countries. The data available in Wheeler and others (1981) and Steinfeld and others (2006) are not sufficient to specify the feed composition at the level of specific crops or crop products. In order to come to that level of detail we use the Supply and Utilization Accounts of FAOSTAT (FAO 2009), which provide the total concentrate feed utilization per country per crop and crop product.
- **Composition of the roughage feed:** We used Bouwman and others (2005) to estimate the composition of the roughage feed (grass, fodder crops, crop residues).
- **Water use for drinking and animal servicing:** Data were obtained from Chapagain and Hoekstra (2003).
- **Water use for mixing feed:** Following Chapagain and Hoekstra (2003), the water use for feed mixing is assumed to be 50% of total concentrate feed intake (or 0.5 liter per kg of concentrate feed intake).